

FOOTNOTES

Portland Country Dance Community

Sept./Oct. 1991

SPECIAL EVENTS

With the impending fall of leaves and temperatures the dance crowd is building up steam. PCDC has a calendar full of hot callers and sizzling sounds lined up for this change of seasons.

The **PCDC First Friday Dance**, September 6 will feature caller **Rich Kuras**. Warming up an evening of contras and squares will be the **Rose City Aces**. 8 PM at the Multnomah Art Center.

A heat wave from the east brings to Portland a **PCDC Special Contradance with Ted Sannella**. A premier caller and favorite with the dance crowd, Ted will be joined by George Penk, Heather Pinney and Clyde Curley. Wednesday, September 11, 8 PM at the Multnomah Art Center.

Suttle Lake Fall Weekend September 13-15. (We probably shouldn't even mention this one ... it's been full for weeks. But it will help explain the unusual dance schedule for a couple of weeks here, as it brings some note-able musicians and a well-versed caller to the Portland area.)

The **PCDC Second Saturday Dance** preempted by **Suttle Lake Fall Weekend**.

Callers' Workshop with Dan Pearl, a favorite caller and dance writer from the Boston area. If you're interested in learning to call or want to refine your technique, don't miss this opportunity, Sunday, September 15th. See calendar for details.

PCDC Special Contradance with Dan Pearl. (If you missed Suttle Lake, here's your chance to join the dance camp experience. Those of you who went will certainly be back for more.) Music by Amy Richardson, Ginny Snowe and Larry Unger. Monday, September 16th, 8 PM at the Multnomah Art Center.

The **PCDC First Friday Dance** of October 4 brings caller **Laura Mé Smith**, a dynamic caller from Seattle will bring musicians Matt Humle and Carol Noise for a lively evening of contras. 8 PM at the Multnomah Art Center.

PCDC presents a **Special Contradance with "Shagamaw"** (the New England version of "Bigfoot"). On a national tour from New Hampshire, the band includes Randy Miller, Tom Hodgson & Jamie Gans. Randy is a leading contradance fiddler and collector of tunes. Friday, October 11th, 8 PM at the Multnomah Art Center.

Mick Doherty and Dan Compton in acoustic concert. Guitar and dulcimer wizardry. Friday, October 11th. 8 pm at the Old Church. Call Jim (503/283-2688) for details.

The **PCDC Second Saturday "Dusk-to-Done" Dance** of October 12. The annual almost allnighter will feature a musical potpourri of callers and musicians. Dance til you drop, stop fora potluck and then dance tilyour feet can't take any more!! 8 PM until it's over, at Warner Grange. Watch for flyers.

Wannadance Uptown, a weekend of traditional dance and music. This event includes contras, squares, Latin dance, Quebecois stepdance, waltz, singing, calling and music workshops. The staff includes Steve Zakon, Ruthie Dornfeld, Seattle's own Neolithic Broadcasters, Greg and Jere Canote, Mark Graham, Jerry Gallaher, and the sizzling twelve-piece ensemble Latin Expression. Halloween costumes optional. October 25-27. Call (206) 784-3477 for information.

Fourth Friday Halloween Contradance features Ted Remillard calling a scintillating series of dances, with the energy charged waves of Island. Here's your chance to don a costume and dance incognito or just enjoy the show. October 26, 8 pm at Fulton Park.

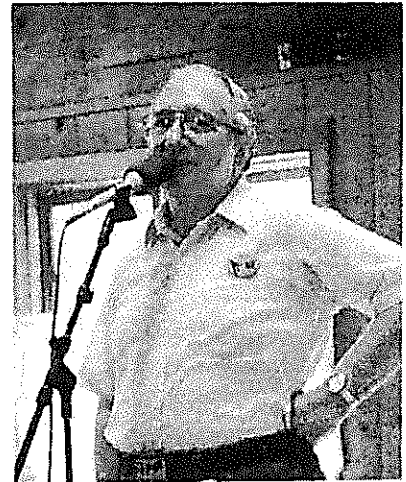
St. Elmo's Choir performs sea shanties. Friday, November 1st. 8 pm at the Old Church. Call Jim (503/283-2688) for details.

Alasdair Fraser and Paul Machlis in acoustic concert. Master Scottish fiddler and piano virtuoso. Sunday, November 17th. 8 pm at the Old Church. Call Jim (503/283-2688) for details.

The Annual PCDC membership meeting was held during the Second Saturday contra dance in July. The following new board members were elected:

*Darrell Desper,
Barbara & Rik Fischer Smoody,
Dave Hamlin,
Wendy Hill,
John Kral, and
Diana Treick.*

Congratulations and welcome!!!



*Ted Sannella calling at
Suttle Lake Fall Dance
weekend 1990.*

Portland Country Dance Location Acronyms

EAT	East Avenue Tavern, 727 E. Burnside
ECHO	Echo Theater, 1515 SE 37th
FAS	French American School, 1849 SW 58th (Sylvan)
FCC	Fulton Community Center, 68 SW Miles (off Barbur, traffic light just east of Terwilliger)
HS	Hough School, 1900 Daniels, Vancouver, WA.
MAC	Multnomah Art Center, 7688 SW Capitol Hwy. (at 31st)
MLB	Melody Lane Ballroom, 615 SE Alder
NWSC	Northwest Service Center, 1819 NW Everett
OC	The Old Church, 1422 SW 11th
PPAA	Portland Police Athletic Assoc., 618 SE Alder

Regular dances

Unless stated, all dances are open to everyone—experienced or not, with or without partners, and feature live music. All dances are taught and children are admitted without charge. At any PCDC dance where sit-in musicians are encouraged to play, they will be admitted free.

PCDC First Friday Dance. This contra dance showcases local and regional callers and dance bands. If you'd like to call or book a band for this dance, please contact PCDC. Musicians are encouraged to sit in with the hired band, but will not be miked. MAC, 8 pm, beginners' workshop 7:30 pm. \$5/\$4 for seniors and PCDC members.

PCDC First Saturday English Country Dance. English Country dance is a source of modern square and contra dance style. FCC, 8 pm, beginner's workshop 7:30 pm. \$5/\$4 seniors and PCDC members.

PCDC Second Saturday Dance, the longest continuously running contra dance in the state. This dance is similar to the first Friday dance, maintaining the tradition. MAC, 8 pm, beginners' workshop 7:30 pm. \$5/\$4 seniors and PCDC members.

Portland Ceili Society Dance is "a gathering of friends" with lively Irish

music, frequently played by world famous musicians. Very aerobic dancing and a full bar are only a few of the notable features of this Third Friday of the month dance, held at Portland Police Athletic Association. Cost \$5.

Third Saturday Contradance is a dance series organized by Paul McCullough. The dances tend towards the challenging side. FCC, 8 pm, beginner's workshop 7:30 pm. \$5.

Fourth Saturday Contradance is another independent dance series, organized by Ted Remillard. FCC, 8 pm, beginner's workshop 7:30 pm. \$5.

CALENDAR • SEPT. / OCT. '91

Note: most dances offer a beginners' workshop half an hour before the listed time.

September

4th (We) Beginner/Intermediate Music Session. Call Sue (503/293-1446) for details.

6th (Fr) PCDC First Friday Dance. 8 pm at MAC. Caller: Rich Kuras. Music: Rose City Aces. \$5/\$4 PCDC members. Beginner's instruction at 7:30.

7th (Sa) PCDC English Country Dance. 8 -10:30 pm at FCC, beginner's instruction at 7:30. Caller: Molly Libby. Music: The New-Tonians. \$5/\$4 PCDC members.

11th (We) Beginner/Intermediate Music Session preempted by dance.

11th (We) Special PCDC Contradance with Ted Sannella. 8 pm at MAC. Music: George Penk, Heather Pinney and Clyde Curley. \$5.

13-15th (Fr-Su) Suttle Lake Fall Weekend.

14th (Sa) PCDC Second Saturday Dance preempted by Suttle Lake Fall Weekend.

15th (Su) Callers' Workshop with Dan Pearl. \$5. Call Nan (245-5675) for details.

16th (Mo) Special Contradance with Dan Pearl. 8 pm at MAC. Music: Amy Richardson, Ginny Snowe, and Larry Unger. \$5.

18th (We) Beginner/Intermediate Music Session. 6:30 pm at 5746 North Haight Avenue. Leader George Penk. Call Jim (503/283-2688) for details.

20th (Fr) Portland Ceili Society Dance. 8:30 pm at PPAA.

21st (Sa) Third Saturday Contradance. 8 pm at FCC. Caller: Paul McCullough. Music: Island. \$5.

22nd (Su) Callers' Workshop. Call Paul McCullough for info: 244-9066.

25th (We) Beginner/Intermediate Music Session. Call Sue (503/293-1446) for details.

27th (Fr) Fourth Friday Scandinavian Dance. 8 pm at IOOF Lodge, 187 High NE, Salem. Check with Sharon (503/364-6713) to confirm.

28th (Sa) Fourth Saturday Contradance. 8 pm at FCC. Caller: Ted Remillard. Music: Whammadiddle Dingbats. \$5.

October

2nd (We) Beginner/Intermediate Music Session. Call Sue (503/293-1446) for details.

4th (Fr) PCDC First Friday Dance. 8 pm at MAC. Caller: LauraMé Smith. Music: Matt Humle and Carol Noise. \$5/\$4 PCDC members. Beginner's instruction at 7:30.

5th (Sa) PCDC English Country Dance. 8-10:30 pm at FCC, beginner's instruction at 7:30. Caller: Dick Lewis. Music: The New-Tonians. \$5/\$4 PCDC members.

8th (Tu) Special PCDC Contradance with Randy Miller Band. 8 pm at MAC. Caller TBA \$5.

9th (We) Beginner/Intermediate Music Session. Leader Dan Compton. Call Jim (503/283-2688) for details.

11th (Fri) Mick Doherty and Dan Compton in concert. Guitar and dulcimer wizardry. 8pm at the Old Church. call Jim (503/283-2688) for details.

12th (Sa) PCDC Second Saturday Dance /Dusk to Done Dance. 8 pm at MAC. Callers & Music tba.

16th (We) Beginner/Intermediate Music Session. 6:30 pm at 5746 North Haight Avenue. Leader George Penk. Call Jim (503/283-2688) for details.

18th (Fr) Portland Ceili Society Dance. 8:30 pm at PPAA.

19th (Sa) Third Saturday Contradance. 8 pm at FCC. Caller: Paul McCullough. Music: George Penk and friends. \$5.

20th (Su) Callers' Workshop. Call Paul McCullough for info: 244-9066.

23rd (We) Beginner/Intermediate Music Session. Call Sue (503/293-1446) for details.

25th (Fr) Fourth Friday Scandinavian Dance. 8 pm at IOOF Lodge, 187 High NE, Salem. Check with Sharon (503/364-6713) to confirm.

25th-27th (Fr-Su) Wannadance Uptown. See special events.

26th (Sa) Fourth Saturday Halloween Contradance. 8 pm at FCC. Caller: Ted Remillard. Music: Island. \$5.

30th (We) Beginner/Intermediate Music Session. Call Sue (503/293-1446) for details.

November

1st (Fr) St. Elmo's Choir performs sea shanties. 8 pm at the Old Church. Call Jim (503/283-2688) for details.

2nd (Sa) PCDC English Country Dance. 8-10:30 pm at FCC, beginner's instruction at 7:30. \$5/\$4 PCDC members.

2nd (Sat) Scandinavian Fiddle Workshop with Andrea Hoag & friends. Call Jim (503/283-2688) for details.

6th (We) Beginner/Intermediate Music Session. Call Sue (503/293-1446) for details.

6th (Fr) PCDC First Friday Dance. 8 pm at MAC. \$5/\$4 PCDC members. Beginner's instruction at 7:30.

17th (Su) Alasdair Fraser and Paul Machlis in concert. Master Scottish fiddler and piano virtuoso. 7 pm at the Old Church. Call Jim (503/283-2688) for details.

PLEASE let us know immediately if your address changes. We get charged a quarter for each newsletter that is returned. And worse yet, you won't get your newsletter. Give your old and new address. Contact Bob Nisbet, 10101 SW 55th, Portland, OR 97210, 244-3971.

This newsletter, *Footnotes*, is published every other month. If you have a dance announcement for the newsletter, please contact the newsletter committee, or send it to PCDC, PO Box 14636, Portland, 97214. Give a concise description of your event, including featured band and callers, date, time, place, cost, and phone number for further info. The information provided here is as accurate as we can make it, and changes or cancellations may not be reflected in this calendar. We encourage submission of letters and articles of interest to the community. Letters and articles become the property of *Footnotes* on publication and may be edited. The DEADLINE for the Nov./Dec. calendar is Oct. 15th.

Portland Country Dance Community is a consortium of dancers, musicians and callers promoting country dance and music traditions through regular dances, workshops and other

events. Everyone is welcome. Our interests include American, English, Celtic, Scandinavian and related traditions, expressed through live performance and participation. With this newsletter, we hope to exchange information and share concerns about traditional music and dance. We publish the newsletter every other month and distribute it to members of PCDC and other folk organizations in the Pacific Northwest. Membership is \$10.00 a year (\$8.00 for seniors), which provides a \$1.00 discount at our regular dances and subscription to the newsletter. Donations in excess of \$10 per year are tax deductible. Correspondence may be sent to PCDC, PO Box 14636, Portland, OR 97214. We are an educational non-profit corporation and also a center of the Country Dance and Song Society, a national organization whose address is 17 New South Street, Northampton, MA 01060.

The PCDC board is an elected body of volunteers from the community. Meetings are held once a month, and community members are always welcome. Help, ideas and feedback from the community, in whatever form, is necessary to make PCDC events happen. Your contributions

of time and support are appreciated. Call any board member for further info. The PCDC board comprises:

Kathy Bowman	244-0125
Allen Cook	628-2946
Darrell Desper	252-6203
Nan Evans	245-5675
Barbara & Rik Fischer Smoody	249-8300
Dave Goldman	224-8811
Dave Hamlin	
Wendy Hill	244-7022
John Kral	239-6919
George Penk	244-4057
Anne Reif	239-4813
Michele Smith	771-1261
Diana Treick	244-6635

Chair: George
 Secretary: Allen
 Treasurer: Nan
 Booking: Michele
 Publicity: Richard
 Newsletter: Dave (224-8811), Terri (235-3153)
 Membership: Bob Nisbet (274-1086)

PCDC May Board Minutes. The annual membership meeting was held during the second Saturday dance in July. New board members were elected: Darrell Desper, Barbara & Rik Fischer Smoody, Dave Hamlin, Wendy Hill, John Kral, and Diana Treick. We discussed the Dusk to Dawn dance. This year the "Dusk to Done" Dance will be held in October. Next year we plan to have a Dusk to Dawn dance in June and have a harvest dance in October, both to be held in the country. The fan has proven itself a success, as its many fans will testify. Barbara and Diana volunteered to organize the ski-dance weekend. Steve Burkle, our long-time sound person is unable to continue doing sound for Portland dances. Many thanks to Steve – we will miss him! We discussed providing proper feedback for sound people who are new to contra dances. The hall monitor concept seems to be working out with a few minor glitches.

Portland Country Dance Community
 P.O. Box 14636
 Portland, OR 97214

*Forwarding and Return Postage Guaranteed
 Address correction requested*

Non-Profit Org. U.S. Postage PAID Permit No. 2375 Portland, OR

