



Footnotes

Portland Country Dance Community · May-June 2010

Northwest Passage:

PCDC's Labor Day Weekend Dance & Music Camp

By Dave Goldman

A weekend filled with high-energy, smooth, flowing contra and English country dance! Exciting bands and charismatic callers!! A plethora of music and singing workshops!!! Astoundingly great food!!!! ***Northwest Passage 2010!!!!***

(This seemed like a good opportunity to repay the dance community for your many exclamation points on past years' evaluation forms.)

So mark your calendars for September 3-6. Applications will appear at dances and in your mailbox (and at www.NWPassageDanceCamp.org) any day now, so be ready!

Last issue we welcomed back renowned caller **Joseph Pimentel** and the amazing **Goldcrest** (Daron Douglas, Dave Wiesler, and Paul Oorts), who delighted everyone at our 2003 weekend. In addition, we've invited a few newcomers to double those delights.

Sue Dupré

Sue was initiated into contra dancing in New England during the late 70's. Now based in central New Jersey, Sue has been calling contra, square and English country dances for over 30 years. She's been a featured performer at many festivals and dance weekends, as well as at summer dance camps on both coasts. Sue's extensive repertoire represents the best of the old and the new. She is known for her enthusiasm and good humor, along with her clear and efficient teaching.

In addition to her work as a caller, Sue is passionately devoted to the promotion and performance of historic English ritual and ceremonial dances in American communities. She is the founder and foreman of a Molly dance team, Handsome Molly, as well as a sword and garland dance team, Shandygaff Longsword. She's also a former member of the rapper team Griggstown Lock, and for many years has directed mummers plays in central New Jersey.



Night Watch

At the forefront of the new generation of dance bands, **Night Watch** performs for contra and English country dances and concerts throughout the U.S., seamlessly meshing their Northern and Southern musical roots. On fiddle, **Naomi**

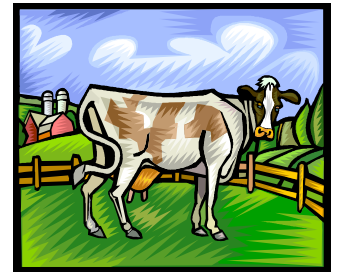
[continued on page two]

D2D Keeps Tradition Alive

By Erin Neff

In the late 1800's, industrial workers had the unions to represent them and thanks to Oliver Hudson Kelley, a Minnesota farmer and activist, farmers across America had the Patrons of Husbandry, a.k.a. The Grange. This is how the Kinton Grange came into being

in 1917. Its purpose was to provide much needed national representation for farmers and ranchers but also, because they tended to lead isolated, independent lives, to provide a social hub for these rural folk.



During WW II, local women used the space to roll bandages for wounded service men. Over the years the Kinton Grange has hosted a wide variety of community events both educational and political, supported many local groups such as the Scouts and the 4-H Club, and served as a place for residents to hold large family gatherings. According to its website (www.kintongrange.org), "it was also the place for a potluck, visit and dance on Saturday nights".

I bet those dances lasted for hours, drawing all the inhabitants from near and far who could possibly make it to this marvelous social opportunity. What could be better than the chance to listen to some foot-tapping music, hold that beautiful woman in your arms that you've thought about since you met in the fields, or stare into that handsome man's face that captured your heart from across the room. Alcohol-free, these Saturday night events welcomed all members of the family for some good, clean fun. Sound familiar?

The modern day version of this community gathering, known as the **Dusk-Till-Done Contra Dance**, will take place at the Kinton Grange on **Sat. June 12th from 8 PM to 1 AM, with a lesson at 7:30**. Not only will this be an occasion to visit and dance, but in keeping with the traditional Saturday nights at Kinton, there will be a potluck. More specifically, a dessert potluck. Some of us may need that extra boost of sugar to keep going all night. The rest of us will coast along thanks to the talented musicians of two different bands: Cascade Crossing (Rich Goss, Sarah Goss, Lori Prime & Carl Thor), and Night Owl (George Penk, Betsy Branch & Mark Douglass); and two energetic callers: Tim Gojio and Sue Baker. Bring your sweetheart (or find one there) and/or your sweet tooth and meet me at Kinton Grange, 19015 SW Scholls Ferry Road, Beaverton.

Volunteers are needed to help with set-up, clean-up, the door and parking lot. Please contact Greg at gregj@northjetty.com.

[Erin Neff is a member of the Contra Committee.]

Northwest Passage 2010

[continued from page one]

Morse finds sounds both fiery and flowing. Her rhythmic Vermont style sparks with French Canadian, Irish and Swedish influences. **Owen Morrison**, hailing from Nashville, contributes rock-solid rhythm guitar, interspersed with facile improvisatory lead guitar and mandolin. New Hampshire native **Elvie Miller** grounds the band with groovy piano accompaniment and accordion leads that leave dancers screaming for more.



Night Watch's recent debut album, *Splendid Isolation*, was a long time in the making. The three musicians are childhood friends who developed a dynamic musical chemistry playing together as teenagers at Pinewoods Camp. Through the succeeding years the trio repeatedly found ways to make music together, despite geographical distance and busy schedules, ever eager to continue their musical conversation.

Beyond the early classical training and deep traditional music roots they all share, each member of Night Watch brings unique musical depth to the band. Elvie spent a year as a Watson Fellow dedicating herself to the accordion and the diverse musical traditions of northern Europe. Naomi has immersed herself in a myriad of vocal styles from Eastern European music, with the choral group Northern Harmony, to Renaissance singing with the ensemble Uncloistered. Owen received a performance degree from Guilford College where he studied classical guitar, flamenco and jazz.

[Dave Goldman is a member of the Northwest Passage Committee.]

Twin Fiddle House Concert

David Kaynor, a well-known fiddler, teacher and caller from New England, and Portland's own very talented fiddle frau, Betsy Branch, are releasing a new CD in May called "Midnight in Montague," featuring fiddle duets that weave together melody and harmony lines. David and Betsy will be giving several concerts (including one at the Northwest Folklife Festival) and playing for dances in Seattle & Corvallis during the month of May. Catch them in the act on Thursday May 13th at 7:30 PM at Betsy's home in SE Portland. For reservations and information contact Betsy at fiddlefrau at gmail dot com or call 503-233-8168. Suggested donation: \$10. CD's will be available.



The Feast is Nigh!

By Ellen Cantor

This year's Danceable Feast will be held at Sky Camp near Eugene, OR, on Nov. 12-14, 2010. We will have the opportunity to dance, once again, to Wild Asparagus from New England, one of the country's pre-eminent contra dance bands, loved for their colorful, dynamic, rhythmic dance music with many stylistic influences. For our swing dance pleasure, we welcome the Canote Brothers with David Cahn, known far beyond their home grounds of Seattle for their playfully accomplished music and eclectic repertoire. We will offer workshops and dancing throughout the weekend, including all levels of swing dance instruction. And we cannot forget the "Feast", as the incomparable Annie Johnston will wow us with her fresh and delectable meals.



Photo by Patricia M. Donohue

Registration for the weekend will begin on June 1st. Applications must be postmarked between June 1st and 10th in order to be considered for the lottery. Applications postmarked earlier than June 1st will not be accepted. The cost of the weekend is \$200 for applications postmarked by June 30th and \$215 for applications received after that date. Cost for children ages 2-5: \$55; ages 6-10: \$110. Children under 2 are free but must be registered.

This year, we hope to offer online registration. Please check the website (www.danceablefeast.org) for updates regarding this possibility as well as for more detailed information about this year's camp and about scholarship opportunities. You may also call Jana at 541-687-8498 or Mollie at 503-957-8742 if you have any questions.

The Portland Raindance presents...
A Special Sunday Night Contra Dance
Open to All!

The Moving Violations!!
Steve Zakon-Anderson!!

May 2nd
7:30-10:30 PM
Beginners lesson at 7

Norse Hall (11th & Couch)
\$15/general public; \$12/PCDC members; \$10/students & seniors

Remember, no dance at Fulton on 5/1!

NW Passage Work-Trades

Northwest Passage offers several work-trade positions. In return for a few hours of help with essential camp tasks, work-traders receive a \$75 discount off their camp fee. Work-trade tasks are arranged for minimal overlap with scheduled events. Contact Rich Goss at 503-327-6582 for more information.



Joyride Spring Dances

By Erik Weberg

The Joyride First Wednesday Dance has two more wonderful callers on the schedule this spring. My, how time flies! Dancers have been so supportive and enthusiastic all year and we certainly appreciate that. A big thank you to each and every dancer who has come to the dance and traded smiles with us on stage. We love doing this gig and you're the reason. We'll start up again in October and hope to see you there.

On May 5th, William Watson will be leading contra dances for us. William has found a home in the Northwest after arriving here from Austin, TX several years ago. He brought with him a wide assortment of great dances and his own charming and downright friendly teaching and calling style. We love working with William and we know you'll have a great evening of dancing.

Our last dance of the season on June 2nd will be led by caller Laura Me Smith from Seattle. Laura Me started the Joyride series four years ago and we're excited to have her back on the Joyride stage. She is an expert leader of contras, squares and English dance, has a sharp, understated wit and a deep arsenal of teaching skills which will make the evening an effortless treat for all of us. Come help us celebrate our fourth season and welcome Laura Me back to Portland.

Dances are held at the Polish Hall (3832 N. Interstate Ave.) from 7:30 to 10 PM. This is a fragrance-free event, so please, no perfumes, colognes, etc. For more information go to: www.klueberg.com/Joyride.html or call 503-246-2219.

Upcoming Events

Compiled by the Editor

5/28-31 Northwest Folklife Festival in Seattle, WA. Four full days of music and dance from all over the world. Learn how to do obscure folk dances from lost Romanian villages; wander about in search of serendipity & enlightenment; find fellow musicians to jam with; or simply contra dance your heart out. Cost: suggested donation of \$10/day. Info: www.nwfolklife.org

6/12 San Juan Island Ferry Dance in Anacortes, WA. Contra dancing on a ferry boat from 2:45-6 PM. Cost: \$14. Info: www.nas.com/~mschway/bcnds/

June 20-26 Lady of the Lake Music & Dance Week in Coeur d'Alene, ID. Workshops for dancers (contra, square, swing, couples), instrumentalists, singers and callers; dancing in the evening. Hiking and swimming too. Staff includes the Latter Day Lizards; Night Owl (George Penk, Betsy Branch & Mark Douglass); the Canotes and callers Seth Tepfer and Cis Hinkle. Accommodations in cabins or tents, meals included. Cost: \$540. Info: www.ladyofthelake.org

6/20-25 Stanford Historical Dance Week in Stanford, CA. A total immersion in historical dance from the 15th through 20th centuries. From the Sarabande to the Congo Minuet to the Hesitation Waltz, learn everything you ever wanted to know about the history of dance. Classes, seminars, concerts & dances. Cost: \$350 includes dorm housing but not meals. Info: <http://socialdance.stanford.edu/SHDW/>

6/26-27 Stanford Waltz Weekend in Stanford, CA. Learn waltz

technique, new variations and secrets for great partnering. Led by Richard Powers and Angela Amarillas. Tuition is \$80, dorm accommodations available for an extra fee, meals not included. Info: <http://socialdance.stanford.edu/SHDW/>

7/3-10 Festival of American Fiddle Tunes in Port Townsend, WA. Classes and tutorials in fiddle, guitar, banjo, button & keyboard accordion, mandolin and piano; clogging & social dance workshops; band labs, hat parties (what's a hat party?); open jams; concerts; dances. Faculty includes Portland's own Betsy Branch. Dorm accommodations and meals at Fort Worden State Park. Cost: \$525 Info: www.centrum.org.

7/3-10 American Dance & Music Week in Mendocino, CA. Contra, square & couple dancing; music, singing and caller workshops; jamming. Staff includes: the Avant Gardeners, the Figments, Cis Hinkle and more. Accommodations in cabins at the Mendocino Woodlands Camp. Cost: \$830 includes meals. Info: www.bacds.org

7/4-10 Bay Area Country Dance Society's Family Week in Sonoma, CA. Dancing, music, crafts, swimming, games, storytelling. Accommodations at Foothill Horizons. Natural, organic meals included. Cost: \$500/kids; \$750/adults. Info: www.bacds.org

8/6-9 Orcas Summer Camp on Orcas Island, WA. Participant run camp with dancing, hiking, boating, swimming and of course, cross-country croquet. Accommodations in cabins; communally prepared meals; family friendly. Info at: www.januscom.com/summercamp/Welcome.html

An Empty Chair at Fulton...

Our good friend and fellow dancer, Betty Stewart, has passed on. She danced off stage on March 11th. She was 89.

Betty's chair remains forever empty, lonely in the northwest corner of Fulton Hall. No one could ever fill that seat the way she did. All dressed up, a sweet smile, eyes lit up with the pleasure of watching others dance, her presence will be sorely missed. Betty may have seemed shy and quiet to those who did not know her. But this was one energetic and animated woman, who would hoot and holler louder than the rest as a former member of the Stumptown Cloggers. She had a full career as a librarian and continued to volunteer at her local library and fill her life with activities she dearly enjoyed, even to the very end. Thank you Betty for sharing your story, for your upbeat approach to life, for your dedication to the dance community. It was an honor to have known you. You will be missed at the dances and in our hearts.

There will be a memorial and celebration of Betty's life held on Sunday, June 6th at 2 PM at the Multnomah Arts Center. It will be sponsored by PCDC and the Portland FolkMusic Society. If you would like to be involved with the planning of this event, contact Christine Appleberry at: crostini5@mac.com

There is a short video of a few moments with Betty on YouTube. If you go there and search for Betty Stewart it will come up. There was an article about Betty in the July/August 2009 Footnotes. It is available on the website at www.PortlandCountryDance.org

CALENDAR • May-June 2010

www.PortlandCountryDance.org • www.kluberg.com/folknews.html

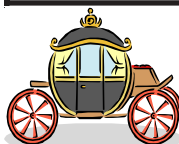
Note: Unless otherwise noted all contra dances begin at 7:30 PM with a 30 minute teaching session, and end at 11 PM. All English country dances begin at 7:30 and end at 10:30 PM.

May

1st	Sat	<i>Raindance Weekend: No Contra Dance at Fulton Community Center</i>		
1st	Sat	Corvallis Contra Dance at FirstCC	Caller: Lynn Ackerson	Music: Moonstruck
2nd	Sun	Special PCDC Post-Raindance Contra Dance at NH, 7:30-10:30 PM; \$12-\$15	Caller: Steve Zakon-Anderson	Music: Moving Violations
3rd	Mon	Old Time Square Dance at VB, 7-9 PM	Caller: Ron Buchanan	Music: Uncle Wiggily
3rd	Mon	Random Waltz: waltzing to CD music every Monday at LB, 8:30-11 PM, \$5, live music on 4th Mondays		
5th	Wed	Joyride First Wednesday Contra Dance at PH, 7:30-10 PM	Caller: William Watson	Music: Joyride
6th	Thu	Waltz Eclectic at FCC, 7:30-10 PM: all styles of waltz and other couples dance to CD music, \$5		
7th	Fri	PCDC English Country Dance at BWT	Caller: Erik Weberg	Music: Open band w/ Carl Thor & Sarah Goss
8th	Sat	PCDC Contra Dance at FCC	Caller: Woody Lane	Music: Tunestruck
8th	Sat	Eugene Contra Dance at CCS	Caller: Erik Weberg	Music: Cascade Crossing
11th	Tues	Square Dance at MTT, 8 PM, \$5	Caller: Paul Silveria	Music: Rabbit Foot
12th	Wed	Square Dance at PFC, every 2nd & 4th Wed., 7-9 PM; live music & callers; free		
14th	Fri	PCDC English Country Dance at BWT	Caller: Mary Devlin	Music: Marjorie Millner, Sarah Goss, Jon Neff, Sean Nolan
15th	Sat	Third Saturday Contra Dance at FCC	Caller: Warren Argo	Music: Jigsaw
15th	Sat	Corvallis Contra Dance at FirstCC	Caller: William Watson	Music: Betsy Branch, David Kaynor, et al.
21st	Fri	PCDC English Country Dance at BWT	Caller: Cynthia Stenger	Music: Carl Thor, Maralyn Belgique, Erik Weberg
22nd	Sat	PCDC Contra Dance at FCC	Caller: Will Mentor	Music: Pete Sutherland & friends
22nd	Sat	Eugene Contra Dance at CCS	Caller: William Watson	Music: Red Crow
28th	Fri	PCDC English Country Dance at BWT	Caller: Nan Evans	Music: Dave Goldman, Skay Lessley, Syd Newell, Fred Nussbaum
29th	Sat	<i>Northwest Folklife Festival: No Contra Dance at Fulton Community Center</i>		

June

2nd	Wed	Joyride First Wednesday Contra Dance at PH, 7:30-10 PM	Caller: Laura Me Smith	Music: Joyride
4th	Fri	PCDC English Country Dance at BWT	Caller: Dave Macemon	Music: Open band w/ Sue Songer, Lori Shaffer
5th	Sat	Cats & Dogs Contra Dance at FCC	Caller: Erik Weberg	Music: Calico
5th	Sat	Corvallis Contra Dance at FirstCC	Caller: Eric Curl	Music: Three-Fingered Jack
6th	Sun	PCDC Memorial for Betty Stewart at 2 PM at the Multnomah Arts Center, 7688 SW Capitol Hwy		
7th	Mon	Norske Runddansere Scandinavian Dance every Monday at FML, 7-10 PM, lesson at 7:30; CD music; \$3		
9th	Wed	Zydeco Dancing to CD music every Wednesday 8-10 PM at PPAA; lesson 7:15; \$5		
11th	Fri	PCDC English Country Dance at BWT	Caller: Mary Devlin	Music: ECD Ball Band: Lisa Scott, Betsy Branch, Fred Nussbaum
12th	Sat	PCDC Dusk Till Done Contra Dance at KG, 8 PM to 1 AM	Callers: Tim Gojio, Sue Baker	Music: Cascade Crossing; George Penk, Betsy Branch, Mark Douglass
12th	Sat	Eugene Contra Dance at CCS	Caller: Susan Petrick	Music: Full Moon
18th	Fri	PCDC English Country Dance at BWT	Caller: Elinor Preston	Music: Sue Songer, Skay Lessley, Lanny Martin, Beverly Stafford
19th	Sat	<i>No Contra Dance at Fulton Community Center -- the floor is being refinished. Carpool to Corvallis!</i>		
19th	Sat	Corvallis Contra Dance at FirstCC	Caller: Tim Gojio	Music: The Nettles
25th	Fri	PCDC English Country Dance at BWT	Caller: Nan Evans	Music: Dave Goldman, Sally Joughin, Sean Nolan, Fred Nussbaum
26th	Sat	PCDC Contra Dance at FCC	Caller: Rich Goss	Music: TBA



Need a ride to the dance? Try http://groups.yahoo.com/group/PDX_Contra/

Dance Locations

BWT	Burlingame Water Tower Dance Hall , 8936 SW 17th Ave (between Spring Garden and Taylor's Ferry Roads)— <i>no street shoes permitted on the dance floor</i>
CCS	Cesar Chavez School , W. 14th Ave & Chambers St., Eugene, OR
FCC	Fulton Park Community Center , 68 SW Miles (off Barbur, traffic light just east of Terwilliger)— <i>must wear shoes in this venue</i>
FirstCC	First Congregational Church (Gatton Hall) , 4515 SW West Hills Road, Corvallis, OR
LB	Lenora's Ballroom , 615 SE Alder (across from PPAA), Portland, OR
KG	Kinton Grange Hall , 19015 SW Scholl's Ferry Rd, Beaverton, OR
MTT	Mount Tabor Theater , 4811 SE Hawthorne Blvd, Portland, OR
NH	Norse Hall , 111 NE 11th & Couch, Portland (1 block north of Burnside)
PFC	People's Food Coop , 3021 SE 21st & Division, Portland
PH	Polish Hall , 3832 N. Interstate Ave, Portland
PPAA	Portland Police Athletic Association , 618 SE Alder St.
ROC	River Oaks Church , 1666 SE Lambert (Sellwood), Portland, OR
VB	Village Ballroom , 700 NE Dekum Ave, Portland, OR

Regular Portland Dances

Unless otherwise stated, all dances are open to everyone — experienced or not, with or without partners—and feature live music. All dances are taught. PCDC encourages sit-in musicians (unmiked) at regular PCDC dances at the discretion of the hired band and caller.

Regular PCDC dances cost \$9/\$7/\$6 for non-members/members/seniors & students.

PCDC Friday English Country Dance Series. Every Friday at BWT, 7:30 to 10:30 PM. Tea and cookies at the break!

The first Friday of each month is an open mike dance for callers and open band for those who would like to play (bring a folding chair and a music stand). Contact Paula Hamlin, 503-691-1758, for more information.

Cats & Dogs First Saturday Contra Dance. The UnLeashed! and Calico bands alternate months with guest callers. FCC, 8-11 PM, beginners' workshop at 7:30. \$8/\$6 students & seniors.

PCDC Second Saturday Family Dance (Oct-Apr). Fun dancing for kids and families. FCC, 5 to 7 PM, with potluck following.

PCDC Second Saturday Contra Dance. The longest continuously running contra dance in the state. FCC, 8-11 PM, beginners' lesson at 7:30.



Portland Ceili Society Third Friday Dance (Sept.-May). Traditional Irish music, dance and drink. PPAA, 9 PM-12:30, lesson at 8. Cost \$10/\$8 students & seniors.

Portland Waltz Eclectic. Waltz Brunch, 3rd Sunday of the month, Norse Hall. Lesson 10:30 - 11:30 AM, open dancing until 2:30 PM. **Also:** Weekly waltz, swing, latin, and other partner dance practice, Thursdays, 7:30-10 PM, Fulton Community Center, 68 SW Miles. .

Third Saturday Contra Dance is organized by Jigsaw. FCC, 8 PM, beginners' lesson at 7:30. \$8/\$6 students.

PCDC Fourth Saturday Contra Dance. FCC, 8-11 PM, beginners' lesson at 7:30.

PCDC Fifth Saturday Contra Dance is an open-mike session for callers and musicians. FCC, 8-11 PM, beginners' lesson at 7:30.

Joyride First Wednesday Contra Dance is organized by the band Joyride with guest callers. October-June at Polish Hall, 7:30-10 PM. \$7/\$6 students w/ ID.

Check out PCDC's website:
www.PortlandCountryDance.org

Norske Runddansere Monday Scandinavian Dance. Friendship Masonic Lodge, 7-10 PM, ongoing lesson 7:30-8:30 PM, \$3. Website: www.norskerunddansere.org

Out of Town Dances

Astoria 3rd Sat. Country Dance: Oct.-Nov., Mar.-May at the Netel Grange, 8 PM. For more info contact Craig at 503-325-8207 or craig.holt@oregonstate.edu.

Bend 2nd Saturday Contra Dance: October through May at Highland School Kenwood Gym, 7:30 PM. For more information contact Kate at 541-330-8943 or katebeardsley@hotmail.com.

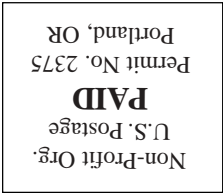
Corvallis 1st & 3rd Saturday Dances: Sept.-June at FirstCC, 8 PM. (*Bring non-street shoes.*) For more information, contact William at williamcallscontras@gmail.com.

Eugene 2nd & 4th Saturday Dances: Sept.-June at CCS, 8 PM. For more info contact Christie or Eric at enthurston@hotmail.com.

Hood River 2nd Saturday Dance: October-June at Rockford Grange, 7:30 PM. For more info contact Keith at 541-352-7550.

Scandia of Salem's 4th Friday Dance: KOC, 8 PM. For more info contact Sharon at 503-364-6713 or sharonmoore@comcast.net.

Get weekly email updates about dances in the Portland area.
 E-mail kluberg@kluberg.com and ask to be put on the list.



RETURN SERVICE REQUESTED

Portland Country Dance Community
P.O. Box 2189
Portland, OR 97208-2189

PLEASE let us know immediately if your address changes. We get charged 44¢ for each newsletter that is returned. And worse yet, you won't get your newsletter. Please provide your old and new address to: Sue Songer, PO Box 2189, Portland, OR 97208-2189, 503-293-1446, songer@portcoll.com.

This newsletter, *Footnotes*, is published every other month. If you have a dance announcement for the newsletter, please contact the newsletter editor, or send it to PCDC, PO Box 2189, Portland, 97208-2189. Give a concise description of your event, including featured band and callers, date, time, place, cost, and phone number for further info. The information provided here is as accurate as we can make it, but late changes and/or cancellations may not be reflected. We encourage submission of letters and articles that might be of interest to the community. Letters and articles become the property of *Footnotes* on publication and may be edited. The **DEADLINE** for submissions for the next issue is the 5th of the previous month.

Portland Country Dance Community is a consortium of dancers, musicians and callers promoting country dance and music traditions through regular dances, workshops and other events. Everyone is welcome. Our interests include American, English, Celtic, Scandinavian, and related traditions, expressed

through live performance and participation. With this newsletter we hope to exchange information and share concerns about traditional music and dance. We publish the newsletter every other month and distribute it to members of PCDC and to other folk organizations. Membership is \$15 a year for individuals, \$12 for students and seniors (65+), or \$25 for households. Membership provides a \$2 discount at all regular PCDC dances, and a subscription to the newsletter. Donations in excess of membership fees are tax deductible. Correspondence may be sent to PCDC, PO Box 2189, Portland, OR 97208-2189. We are an educational nonprofit corporation and also a Center of the Country Dance and Song Society, a national organization whose address is 132 Main St./ PO Box 338, Haydenville, MA 01039-0338.

The PCDC board is an elected body of volunteers from the community. Meetings are held approximately every six weeks. Community members are welcome to attend. Help, ideas and feedback from the community, in whatever form, is necessary to make PCDC events happen. Your contributions of time and support are appreciated. Call any board member for further info.

The current PCDC board members are:

- Kim Appleberry (Contra Committee)....503-319-1717
pdapple@comcast.net
- Carmen Doerge (NWP Committee).....503-287-8468
carmendoerge@comcast.net
- Tim Gojio (Chair).....253-831-0963
ggojio@yahoo.com
- Sarah Goss (Treasurer).....503-927-7777
sfgoss@comcast.net
- Diane Hunt (Secretary).....503-977-2917
dianemhunt@yahoo.com
- Chris Mullooly (English).....503-774-6531
mullooly@comcast.net
- Jon Neff (Outreach).....503-381-9981
jon@jonneff.net

- Mailing list & membership:* Sue Songer
503-293-1446 or songer@portcoll.com
- Contra dance booking:* Gordy Euler
503-289-8669 or euleromi@pacifier.com
- English country dancing:* Chris Mullooly
503-774-6531 or mullooly@comcast.net
- Northwest Passage:* Karsten Kelly
503-236-3089 or karsten@technotop.com
- Family dance:* Laurie Hoefler
503-981-2179 or hoeflerlaurie@yahoo.com
- Footnotes editor:* Laurel Thomas
503-331-9197 or laureland3@yahoo.com
- Webmaster:* Rick Piel
web.guy@portlandcountrydance.org