



Footnotes



Portland Country Dance Community -- July-August 2012

In My Opinion

The Final Fulton Update

By Kim Appleberry

The Battle to Save Fulton Community Center is over. The forces of darkness have outflanked the forces of light. Fulton will be closed as a community center.

We were, however, able to secure one accommodation from the other side. The renters who have been using Fulton can continue to rent the space. Rents will go up – some a little, some a lot. Some renters will be able to handle the increase, some will not. For now, the contra dances will continue every Saturday night.

We never did find out why they wanted so much to close Fulton. We know it wasn't about the money. In the end City Council voted 5-0 in favor of the final budget. In the last round, Buckman pool was saved from closure. It had almost the same amount of money attached to it. The Oregonian, in an editorial, said it was saved because of an outpouring of public support. But Fulton had ten times the showing that Buckman had.

In the final budget, the city is giving Portland Public Schools \$5 million. As part of that package they negotiated an agreement to purchase a section of land next to the old Washington High School to "build a small community center." In the Council's final budget session, Commissioner Randy Leonard pointed this out and talked about the "importance to the community of even a limited, small community center." Minutes later he voted for the budget that closes Fulton.

In the same final budget session, Amanda Fritz said, "I'm happy that we've been able to fund the community centers, Fulton Community Center and Buckman Pool – items that are important to the citizens. This is the council that listens." Seconds later she voted for the budget that closes Fulton.

It's a mystery. I've got a strawberry pie for anyone who can tell me the real reason they are so determined to close Fulton.

How long the rental arrangement will last is anybody's guess. My guess is that we're good through the current budget year. But come next budget cycle, they will be back whining about money and will double the rents, thereby accomplishing the full closure of Fulton that they have been looking for. So maybe we have a year. I hope I'm wrong.

A great big "thank you" to all those who turned out and wrote letters and emails to save Fulton. All your hard work was not without effect. We did get their attention and bring about the rental arrangement. Also we came together even more as a community. It felt good to be a part of the Red Tide. Now back to the dancing.

[Kim Appleberry is a Portland dancer. His views do not necessarily reflect those of PCDC.]

Northwest Passage Dance Camp

Labor Day Weekend 2012

By Karsten Kelly

It's not too late! There are still spaces available at PCDC's 2012 Labor Day Dance and Music Weekend. Captivating contras and energetic English dances will fill this four day weekend camp from morning until late at night. Plus, a plethora of workshops and impromptu jam sessions will keep you happily busy in between dances.

We're flying in two hot bands: Paul Hutchinson and John Hymas all the way from England plus the quartet Roguery from various West Coast locations. Two up-and-coming young callers, Rebecca Lay from Vermont and Wendy Graham from Colorado, will be calling exciting dances for us all weekend long. John Oorthuys will be making all of them sound great. Beth Gibans will again provide us with her wonderful, primarily locally-sourced cuisine.

More information and an application form are available at our website: www.NWPassageDanceCamp.org. Questions? Contact Dave at info@NWPassageDanceCamp.org



Learning a new tune at NWP 2011.

New Board Members Elected

The annual PCDC membership meeting took place at the Dusk 'Til Done Dance on June 9th. Many, many volunteers were thanked for their contributions and two new PCDC Board members (Mary Devlin & Mike Voss) were elected by acclamation to 2-year terms. They join Carmen Doerge, Sarah Goss, Jon Neff, Lou Payne and Dan Cottle.

It takes a village to put on a dance – from booking the talent to updating the website, from sitting at the door to sweeping the floors and putting away the chairs. If you are interested in volunteering, speak to any board member or major volunteer (listed on back page). And thank you!

Portland Roadhouse Dance Deemed a Success!!

By Gordy Euler

The numbers are in for the Portland Roadhouse, and they show that the event is not only successful but is gaining in popularity. The Roadhouse is the last event of the Cascade Promenade, a series of dances in March that includes the Portland Megaband dance.

This year's Roadhouse, held on March 11th, was the third and organizers are thinking of it as the 'third annual.' The Portland Roadhouse is now a non-profit organization, so look for many more Roadhouse Dances to come.

There were about 220 paid admissions to this year's Roadhouse, which is 40 more folks than attended in 2011. The event earned about \$600 after expenses which were higher this year as, for the first time, traveling bands and callers received travel reimbursement similar to what PCDC pays. Organizers decided early on that the Roadhouse would be a benefit event, with bands and callers donating their time and talent. As a result, this year \$400 is being donated to the Northwest Folklife Festival.



Photo by Doug Plummer

Also new this year was the concept of the Iron Dancer – folks that danced all four days of the Cascade Promenade. There were 29 people who did just that, the Portland Roadhouse being the last dancing venue.

Evaluations from this year's event have already been reviewed. Even though planning for the 2013 Roadhouse won't begin in earnest until the fall, suggestions, comments, and ideas are always welcome. The organizing committee for 2012 included Woody Lane, Dave Hamlin, Sue Songer, Mike Richardson, Gordy Euler, Chelsea Clawson, Marcia Karnesky, Virginia Prowell, Sharron Airey and Megan Emerson. Organizers would like to thank the many volunteers who contributed to making the event run smoothly. Most importantly, thanks to you, the dancers, for attending! See you on March 10, 2013 for next year's Portland Roadhouse!

[Besides being one of the organizers of the Roadhouse event, Gordy Euler is the talent booker for PCDC contra dances, a leader of the Portland Megaband, and is also a caller, a musician and lord knows what else.]

Vancouver Dance Series Continues into Summer

By Sue Gray

Contra in the 'Couve has been running since December of 2010 and by all reports, is thriving. Continuing into summer, July's dance will be on the 13th at the Hazel Dell Grange, 7509 NE Hazel Dell Avenue in Vancouver, WA. Kat diFoxfire Wilson journeys down from Gig Harbor to call. Local band LCL Express with fiddler Lori Prime, our own Carl Thor on Piano, and Lanny Martin on accordion, will keep us swinging and swaying.

On August 10th, our caller will be Ashland's Brooke Friendly, with tunes from the Eugene band, Mad Robin featuring Victor Fiore on fiddle and 5-string fiddle, Cecily Morris on piano, and Art Morris on upright bass.

The Hazel Dell Grange has a great dance floor and is only 10 miles from downtown Portland. Dancing from 8-11 with a lesson at 7:30. All are welcome!

PCDC Board Meeting

By Cindy Correll

Apr. 23, 2012. Present: C. Correll, D. Cottle, C. Doerge, M. Devlin, L. Payne.

Twenty-two children, plus parents, from the Renaissance School of Arts, led by Susan Dunn, attended a recent English dance. The children had been learning English dance in school, and they designed and made their own costumes for the event. Everyone enjoyed their energy and enthusiasm – and their dancing skills. The fact that they were adorable in their costumes added to the delightful evening. This was a wonderful outreach opportunity and will hopefully be repeated once school starts up again.

The Contra Committee has been working on Raindance and the Techno Contra scheduled for June 30th. The committee is also working on the New Year's Eve dance, hoping to hold a joint event with Dance Eclectic at Norse Hall, as it did last year. The dance will be held on Sat. the 29th because Norse Hall is already booked for New Year's Eve.

The Fulton Community Center situation was discussed. PCDC will continue to use the facility on a rental basis.

Louis Payne's term on the board is up and he has decided to stay on for another term – good for you, Lou! My term is also up and I am stepping down as secretary. It's been an honor serving with my fellow board members to assist PCDC. I'm grateful for the opportunity and hope to see y'all on the dance floor again one of these days!

Next board meeting: June 18, 6:30 pm.



There's no dance at Fulton on 7/7

Alternative? Zydeco at the Waterfront Blues Festival from noon to 11 pm.



Joyride Summer Notes

By Erik Weberg

The Joyride First Wednesday contra dances are on hiatus for the summer, but we have lots of music to play for you.

On July 14th we'll be playing the PCDC contra dance with supreme caller Carol Ormand from Madison, WI. And the weekend of August 10-12th we'll be playing at the Balance the Bay Dance weekend in San Francisco, sharing the stage with the Great Bear Trio. Exciting!

The First Wednesday contra dance series at Polish Hall will resume on September 5th with Susan Petrick calling. More information about our next season can be found on our web site: www.kluberg.com/Joyride.html

Thank you all for another delightful First Wednesday season and have a great summer!

Upcoming Regional Events

7/27-8/4 Lark Camp in Mendocino, CA. Music & dance workshops for adults and families. Motivational instructors, inspired students, passionate participants. And fire circles. Cost: \$370-\$642. www.larkcamp.com/information.html

8/3-6 Orcas Summer Camp in San Juan Islands, WA. All ages, all dancers, all musicians, all folks welcome dance camp! Contra dances in the evening, cross-country croquet during the day. No staff! Bring your talents and interests to share. www.januscom.com/summercamp/Welcome.html

8/19-26 Hey Days in Healdsburg, CA. English Country Dance & Music weekend sponsored by BACDS features a program that will challenge and delight both new and experienced participants. Classes & workshops during the day, merry abandon in the evenings. Cost: \$826. www.bacds.org/camps/eweek2012/index.shtml

8/31-9/3 Northwest Passage Dance Camp at Mt. Hood, OR. PCDC's very own dance camp! Gorgeous scenery, splendid dancing, TONS of workshops, incredible talent! Contra and English. Cost: \$60-\$305; scholarships available. www.kluberg.com/NWP2012/index.html

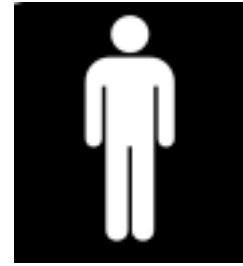
9/7-9 Bear Hug Mountain Festival in Rollins, MT. Contra dance camp on a beautiful lake with the Avant Gardeners, the Fiddlerats, Susan Petrick and Spider Vetter. Cost: \$155. www.missoulafolk.org/bearhug/Bear_Hug_2012.htm

9/14-16 Chehalis Dance Camp in Agassiz, BC. Contra dance camp at a lovely riverside retreat featuring callers David Kaynor & Wendy Graham and bands Nor'easter & the Van Norstrands. Cost: \$250. www.vcn.bc.ca/vcountry/chehalis/index.html

10/5-7 Lady of the Lake Dance & Music Weekend at Lake Coeur d'Alene, ID. Contra, swing, square dancing, workshops with caller Cis Hinkle. Cost: \$170. www.ladyofthelake.org/site/Fall_Weekend.html

10/12-14 Fall Frolick in Aptos, CA is an almost all ECD weekend sponsored by BACDS. Workshops, display dancing (Morris, longsword, clog), noisy & silent auctions, late night silliness, some contra, big trees. www.bacds.org/camps/fallwk2012/index.html

Is t his you?



Then you are...



(Preferably alive.)

for...

DANCEABLE FEAST!

November 9-11, 2012

A few more GENTS are needed for this weekend of delicious dancing and dining at Sky Camp. Captivating contras, scintillating swing, copious amounts of delectable food, AND Wild Asparagus. What more could a fella ask for??

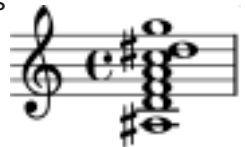
Register at www.danceablefeast.org

"It's not called Danceable Feast for nothing!"

Sharpen Your Skills...

• *First Thursday Tune Sessions*

Learn tunes by ear with alternating teachers Dan Compton & George Penk. All melody instruments welcome; some experience learning tunes by ear is helpful. Cost is \$7 for PCDC members. For more information contact [climb2ski at gmail](mailto:climb2ski@gmail.com).



• *Pizza Jam*

Play contra-type music with a group on 1st & 3rd Mondays from 8-10 pm. All levels of players are welcome. Free! For more information contact [sydnewell at mac dot com](mailto:sydnewell@mac.com).

• *Guided Waltz Practicum*

Frame and connection waltz basics with an emphasis on rotary and cross step. A part of every session is devoted to the cross step waltz mixer and its variations. Thursdays at FCC, 6-7 pm; \$5. More info: [rhondamcfaddin at yahoo](mailto:rhondamcfaddin@yahoo.com).

CALENDAR • July-August 2012

www.PortlandCountryDance.org www.kluberg.com/folknews.html

Note: Unless otherwise noted all contra dances begin at 7:30 pm with a 30 minute teaching session, and end at 11 pm. All English country dances begin at 7:30 and end at 10:30 pm.

July

Date	Dance	Caller	Music
6th Fri	PCDC English Country Dance at BWT	Elinor Preston	Open band w/ Carl Thor & Lanny Martin
7th Sat	No Cats & Dogs Dance due to a wedding at Fulton		
13th Fri	PCDC English Country Dance at BWT	Dave Macemon	Bernice Rust, Sean Nolan, Jon Neff, Marjorie Millner
13th Fri	Contra in Vancouver at HDG	Kat diFoxfire Wilson	LCL Express
14th Sat	PCDC Contra Dance at FCC	Carol Ormand	George Penk, Erik Weberg, Jeff Kersson-Griep, Mark Douglass
20th Fri	PCDC English Country Dance at BWT	Erik Weberg	Lori Shaffer, Sarah Goss, Sue Songer
21st Sat	Third Saturday Contra Dance at FCC	Erik Weberg	Jigsaw
27th Fri	PCDC English Country Dance at BWT	Cynthia Stenger	Laurel Koran, Sean Nolan, Marjorie Millner
28th Sat	PCDC Contra Dance at FCC	Gordy Euler	Tapsalteerie

August

Date	Dance	Caller	Music
3rd Fri	PCDC English Country Dance at BWT	Mary Devlin	Open band w/ Erik Weberg & Carl Thor
4th Sat	Cats & Dogs Contra Dance at FCC	Woody Lane	Calico
10th Fri	PCDC English Country Dance at BWT	Cynthia Stenger	Lori Shaffer, Marjorie Millner, Lanny Martin
10th Fri	Contra Dance in Vancouver	Brooke Friendly	Mad Robin
11th Sat	PCDC Contra Dance at FCC	Brooke Friendly	Clyde Curley, David Cahn, Bill Meyers
17th Fri	PCDC English Country Dance at BWT	Elinor Preston	Leslie Hirsch, Sarah Goss, Carl Thor
18th Sat	Third Saturday Contra Dance at FCC	Susie Kendig	Erik Killops, Dan Compton, Fran Slefer
24th Fri	PCDC English Country Dance at BWT	Dave Macemon	Sarah Goss, Maralyn Belgique, Jon Neff, Sue Songer
25th Sat	PCDC Contra Dance at FCC	Laurel Thomas	Steeltones (Dave Hamlin, Keith Moe, Jon Neff)
<i>31 August & 1 September ---- N O English country or contra dances due to Northwest Passage</i>			

More Regular Portland Dances

Mondays	Norske Runddansere: Scandinavian Dancing to CD music at PH, 7-10 PM, lesson at 7:30, \$4
Mondays	Random Waltz: couples dancing to CD music at LB, 8:30-11 PM, open band last Monday of the month, \$5
Tuesdays	Tuesday Blues: blues dancing to CD music at LB, 8 PM to 1 AM, lessons at 7:30 & 8:30, \$6
Wednesdays	Zydeco dancing to CD music at PPAA, lesson at 7:15, dance 8 to 10 PM, \$5
Thursdays	Portland Waltz Eclectic: couples dancing to CD music at FCC, 7:30-10:30 PM, \$6
3rd Sundays	Portland Waltz Eclectic Brunch: couples dancing to CD music at NH, 11:30-2:30 PM, lesson at 10:30, \$10 for dance, \$12 for dance & lesson; snacks included.



Dance Locations

BWT	Burlingame Water Tower Dance Hall , 8936 SW 17th Ave (between Spring Garden and Taylor's Ferry Roads) <i>No street shoes permitted on the dance floor.</i>
Dunn	Dunn School , 3411 Willamette St., Eugene, OR
FCC	Fulton Park Community Center , 68 SW Miles (off Barbur, traffic light just east of Terwilliger) <i>Please wear dance shoes!</i>
FirstCC	First Congregational Church (Gatton Hall) , 4515 SW West Hills Road, Corvallis, OR
HDG	Hazel Dell Grange , 7509 NE Hazel Dell Ave, Vancouver, WA
LB	Lenora's Ballroom , 615 SE Alder (across from PPAA), Portland
MCC	Milwaukie Community Club , 10666 SE 42nd Ave, Milwaukie, OR
NH	Norse Hall , 111 NE 11th Ave (corner of Couch St.), Portland
OP	Oaks Park Pavilion , 400 SE Spokane Street (in Sellwood), Portland
PH	Polish Hall , 3832 N. Interstate Ave, Portland
PPAA	Portland Police Athletic Association , 618 SE Alder St, Portland
PSU	Smith Memorial Ballroom @ PSU , 1825 SW Broadway, Portland

Regular Portland Dances

Unless otherwise stated, all dances are open to everyone — lesson at 7:30.

experienced or not, with or without partners— and feature live music. All dances are taught. PCDC encourages sit-in musicians (unmiked) at regular PCDC dances at the discretion of the hired band and caller.

Regular PCDC dances cost \$9/\$7/\$6 for non-members/members/seniors & students.

PCDC Friday English Country Dance Series. Every Friday at BWT, 7:30 to 10:30 pm. Tea and cookies at the break. Open band on first Fridays (bring a folding chair and a music stand). Contact Sean.Nolan.public.@comcast.net for more information.

Cats & Dogs First Saturday Contra Dance. The UnLeashed! and Calico bands alternate months with guest callers. FCC, 8-11 pm, beginners' workshop at 7:30. \$8/\$6 students & seniors.

PCDC Second Saturday Family Dance (Oct-Apr). Fun dancing for kids and families. FCC, 4:30-6:30 pm. \$6/adults; \$5/kids; \$20/family max.

PCDC Second Saturday Contra Dance. The longest continuously running contra dance in the state. FCC, 8-11 pm, beginners'



Portland Ceili Society Third Friday Dance (Sept.-May). Traditional Irish music, dance and drink. PPAA, 9 pm-12:30, lesson at 8. Cost \$10/\$8 students & seniors.

Third Saturday Contra Dance. Organized by the band Jigsaw. FCC, 8 pm, beginners' lesson at 7:30. \$8/\$6 students.

Portland Waltz Eclectic. Waltz Brunch, 3rd Sunday of the month, Norse Hall. Lesson 10:30 - 11:30 AM, open dancing until 2:30 PM. **Also:** Weekly waltz, swing, latin, and other partner dance practice, Thursdays, 7:30-10 pm, Fulton Community Center, 68 SW Miles.

PCDC Fourth Saturday Contra Dance. FCC, 8-11 pm, beginners' lesson at 7:30.

PCDC Fifth Saturday Contra Dance is an open-mike session for callers and musicians. FCC, 8-11 pm, beginners' lesson at 7:30.

Joyride First Wednesday Contra Dance is organized by the band Joyride with guest callers. Sept.-June at Polish Hall, 7:30-10 PM. \$7/\$6 students w/ ID.

www.PortlandCountryDance.org



**Portland Country
Dance Community**

Get weekly email updates about dances in the Portland area.
E-mail <kluberg@kluberg.com> and ask to be put on the list.

Norske Runddansere Monday Scandinavian Dance. Polish Hall, 7-10 pm, lesson at 7:30, \$4. Website: www.norskerunddansere.org

Out of Town Dances

Astoria 3rd Sat. Country Dance: Sept., Nov., Mar.-May at the Netel Grange, 8 pm. For more info contact Craig at 503-325-8207 or craig.holt@oregonstate.edu.

Bend 2nd Saturday Contra Dance: October through May at Bend Boys & Girls Club, 7:30 pm. Note: there will be a 4th Saturday dance from Jan-Apr. Contact: webmaster@bendcontrdance.org

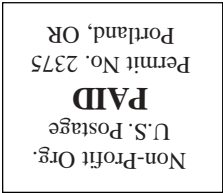
Corvallis 1st & 3rd Saturday Dances: Sept.-June at FirstCC, 8 pm. (*Bring non-street shoes.*) For more information, contact William at williamcallscontras@gmail.com.

Eugene 2nd & 4th Saturday Dances: Sept.-June at Dunn, 8 pm. For more information contact dancecoord@eugenefolklore.org

Hood River 2nd Saturday Dance: October-June at Rockford Grange, 7:30 pm. For more info contact Callie at 541-296-1550.

Scandia of Salem's 4th Friday Dance: KOC, 8 PM. Contact Sharon at 503-364-6713 or sharonmoore@comcast.net.

Vancouver 2nd Friday Contra Dance: Hazel Dell Grange, 8-11 pm w/ lesson at 7:30. Info: www.contra-van-wa.org



RETURN SERVICE REQUESTED

Portland County Dance Community
P.O. Box 2189
Portland, OR 97208-2189

PLEASE let us know immediately if your address changes. We get charged 45¢ for each newsletter that is returned. And worse yet, you won't get your newsletter. Please provide your old and new address to: Jon @JonNeff.net, or call 503-245-2041.

This newsletter, *Footnotes*, is published every other month. If you have a dance announcement for the newsletter, please contact the newsletter editor, or send it to PCDC, PO Box 2189, Portland, 97208-2189. Give a concise description of your event, including featured band and callers, date, time, place, cost, and phone number for further info. The information provided here is as accurate as we can make it, but late changes and/or cancellations may not be reflected. We encourage submission of letters and articles that might be of interest to the community. Letters and articles become the property of *Footnotes* on publication and may be edited. The **DEADLINE** for submissions for the next issue is the 5th of the previous month.

Portland Country Dance Community is a consortium of dancers, musicians and callers promoting country dance and music traditions through regular dances, workshops and other events. Everyone is welcome. Our interests include American, English, Celtic, Scandinavian, and related traditions, expressed through live performance and participation. With this

newsletter we hope to exchange information and share concerns about traditional music and dance. We publish the newsletter every other month and distribute it to members of PCDC and to other folk organizations. Membership is \$15 a year for individuals, \$12 for students and seniors (65+), \$25 for households, and \$20 for senior households. Membership provides a \$2 discount at all regular PCDC dances, and a subscription to the newsletter. Donations in excess of membership fees are tax deductible. Correspondence may be sent to PCDC, PO Box 2189, Portland, OR 97208-2189. We are an educational nonprofit corporation and also an affiliate of the Country Dance and Song Society, a national organization whose address is 132 Main St.; PO Box 338, Haydenville, MA 01039-0338.

The PCDC board is an elected body of volunteers from the community. Meetings are held approximately every six weeks. Community members are welcome to attend. Help, ideas and feedback from the community, in whatever form, is necessary to make PCDC events happen. Your contributions of time and support are appreciated. Call any board member for further info.

The current PCDC Board members are:

- Mary Devlin (English Rep).....503-236-8062
mary@mdevlin.com
- Carmen Doerge (Co-Chair, NWP Rep)...
carmendoerge@comcast.net
- Sarah Goss (Co-Chair, Treasurer).....503-927-7777
sfgoss@comcast.net
- Jon Neff (Outreach).....503-245-2041
jon@jonneff.net
- Lou Payne (Family Dance Rep)
louiscpayne@yahoo.com
- Dan Cottle (Contra Rep).....401-829-3882
dan.cottle@gmail.com
- Mike Voss (Member-at-Large)

Other major PCDC volunteers:

- Contra dance booking: Gordy Euler
503-289-8669 or euleromi@pacifier.com
- Contra Committee Chair: Kim Appleberry
503-319-1717 or pdxapple@comcast.net
- English Committee Chair: Chris Mullooly
503-774-6531 or mullooly@comcast.net
- Family dances: Maud Whalen
503-775-6537 maudonline@prettyarmadillo.com
- Footnotes editor: Laurel Thomas
503-331-9197 or laureland3@yahoo.com
- Mailing list & membership: Jon Neff
503-245-2041 or jon@jonneff.net
- Northwest Passage: Karsten Kelly
503-236-3089 or karsten@technotop.com
- Webmaster: Rick Piel
web.guy@portlandcountrydance.org